

INVUE | LIVE™

If you already have login information for the app proceed to the next step. Otherwise, see below.

First time setup

Before using the app, users and site information must be set up within the **InVue LIVE web portal**.

This should be completed by a manager or admin using the information sent by InVue Customer Service.

If you are a manager or admin and have not received this information via email from InVue Customer service, please submit a service request.

IMPORTANT:

Do NOT remove the battery tab until the Panic Button has been successfully enrolled into the InVue LIVE App.

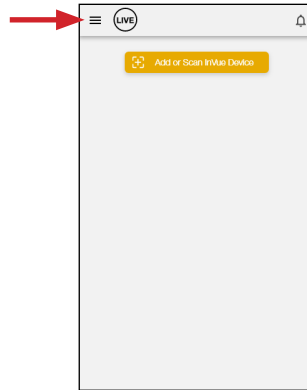


- 1 If not already installed on your smart phone or tablet, download the InVue LIVE Display app from the Google Play store. Log in using the information provided by your manager or admin.

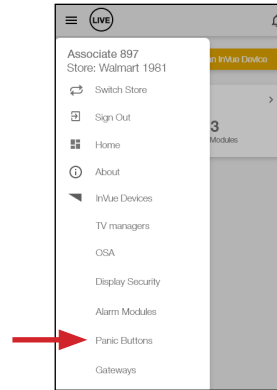
- 2 With the InVue LIVE Display app open on your smart phone or tablet, press the “Add or Scan InVue Device” button.



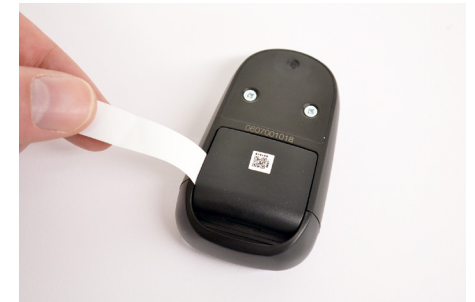
- 3 Use the smart phone or tablet's camera to scan the barcode on the Panic Button (the Device ID can also be entered manually). Follow the prompts in the app to set up the button.



- 4a To check that the Panic Button has been successfully enrolled, click the menu icon at the top of the screen.



- 4b Select “Panic Buttons” from the drop-down menu to check status and/or make changes.

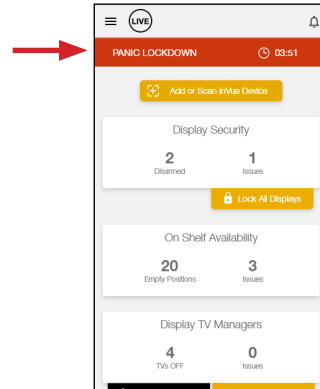


- 5 Once successfully enrolled in the app, pull the battery tab from the panic button.

LIVE Panic Button DLD220



- 6 Press the red button to complete activation. The LED will illuminate red. Any lockable sensors may respond to this button press.
Note: It may take several minutes for the app to refresh and allow regular use of the panic button.



- 7 Once successfully enrolled in the app, the Panic button may be used to lock down all assigned OnePOD LIVE positions at once. These positions will remain locked for a preset duration of time that was set within the InVue LIVE Admin Portal. A red banner will appear at the top of the app showing the time remaining. The positions will automatically unlock once this time expires.

FCC Compliance

This device complies with Part 15 of the FCC Rules. Operation is subject to the following two conditions: (1) this device may not cause harmful interference, and (2) this device must accept any interference received, including interference that may cause undesired operation.

Changes or modifications not expressly approved by the party responsible for compliance could void the user's authority to operate the equipment.

This equipment has been tested and found to comply with the limits for a Class B digital device, pursuant to Part 15 of the FCC Rules. These limits are designed to provide reasonable protection against harmful interference in a residential installation. This equipment generates, uses and can radiate radio frequency energy and, if not installed and used in accordance with the instructions, may cause harmful interference to radio communications. However, there is no guarantee that interference will not occur in a particular installation.

If this equipment does cause harmful interference to radio or television reception, which can be determined by turning the equipment off and on, the user is encouraged to try to correct the interference by one or more of the following measures:

- Reorient or relocate the receiving antenna.
- Increase the separation between the equipment and receiver.
- Connect the equipment into an outlet on a circuit different from that to which the receiver is connected.
- Consult the dealer or an experienced radio/TV technician for help.

ISED Regulatory Compliance

This device contains licence-exempt transmitter(s)/receiver(s) that comply with Innovation, Science and Economic Development Canada's licence-exempt RSS(s). Operation is subject to the following two conditions:

- (1) This device may not cause interference.
- (2) This device must accept any interference, including interference that may cause undesired operation of the device.

This equipment complies with IC RSS-102 radiation exposure limits set forth for an uncontrolled environment.

L'émetteur/récepteur exempt de licence contenu dans le présent appareil est conforme aux CNR d'Innovation, Sciences et Développement économique Canada applicables aux appareils radio exempts de licence. L'exploitation est autorisée aux deux conditions suivantes :

- (1) L'appareil ne doit pas produire de brouillage;
- (2) L'appareil doit accepter tout brouillage radioélectrique subi, même si le brouillage est susceptible d'en compromettre le fonctionnement.

Cet équipement est conforme aux limites d'exposition aux radiations IC CNR-102 établies pour un environnement non contrôlé.

SD0818 Rev1 07/19/22